

BootcampDrivers.com

READ ME FIRST – iMac Pro users

CONTENTS:

INSTALL GUIDE: PAGE 1 – 3

OVERCLOCKING: PAGE 4 - 6

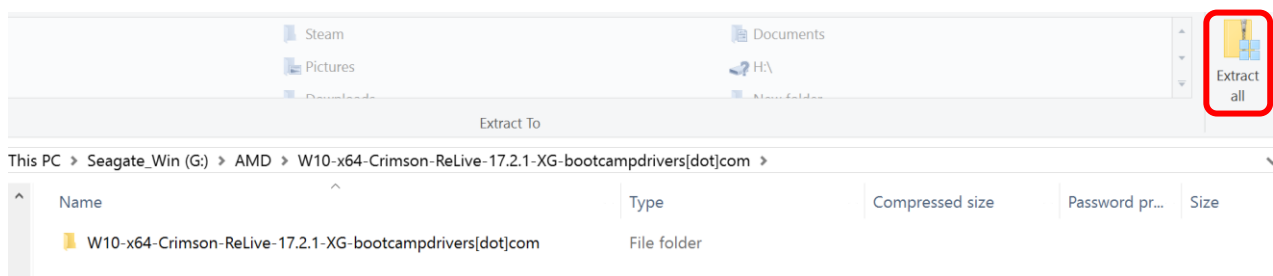
INSTALL GUIDE

Ensure that Windows is fully up-to-date. Drivers require at least Windows 10 Anniversary Edition, 8.1 or 7 SP1.

Do NOT uninstall the official driver first!

If you have already installed a previous update from us, you can update over that one too via this same process.

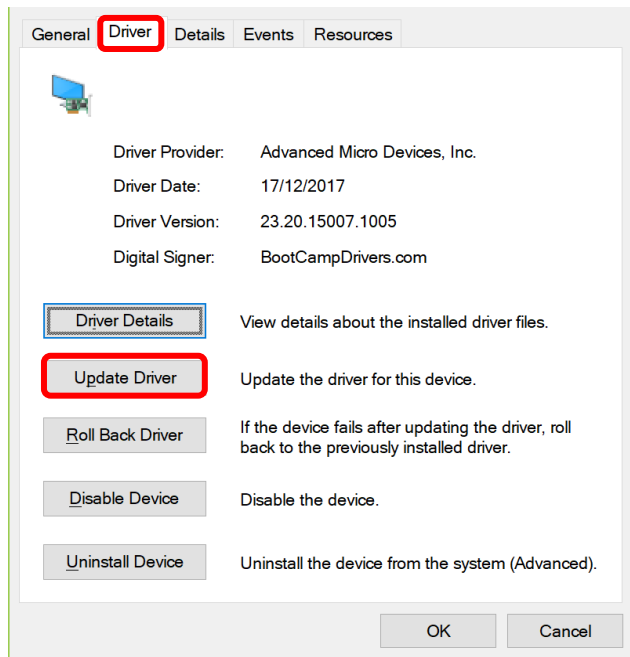
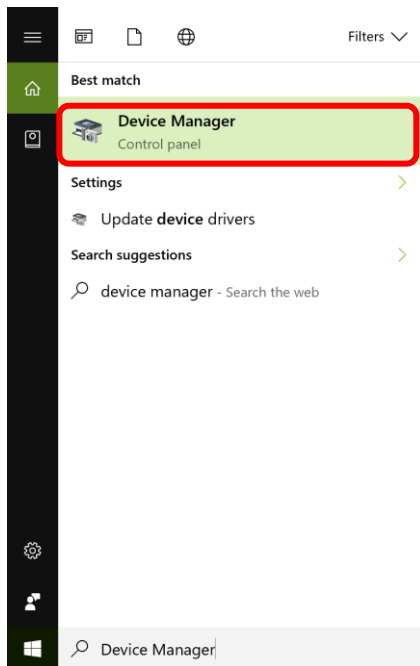
- 1) Open the downloaded ZIP file and click 'Extract All' in Windows Explorer. Choose a location to extract the files on the next screen.



- 2) DO NOT RUN DDU (Display Driver Uninstaller). The current official AMD bootcamp drivers need to be already installed so that only the required files are copied across from the newer driver. Go to step 3.
- 3) Now we are ready to install the new drivers on top of the old ones. Search for 'device manager' in the bottom-left of the Windows task bar and open Device Manager (see screenshots on the next page)

Under 'Display adapters' it should show your graphics card driver as 'Vega 56' or 'Vega 64'. Right-click this and then click on 'Properties'.

Now click on the 'Driver' tab and select 'Update driver' as shown on the next page.



- 4) Next, select 'Browse my computer for driver software'.
- 5) Select 'Let me pick from a list of available drivers on my computer'. Then click 'Have Disk...' on the next screen.
- 6) Click 'Browse' and navigate inside the driver folder to '**Packages > Drivers > Display > WT6A_INF**'. Click on 'Cxxxxxx.inf' (where the 'x' is a number) and select 'Open'. Then, click 'OK' on the 'Install from Disk' window (see screenshots below).

Browse for drivers on your computer

How do you want to search for drivers?

→ Search automatically for updated driver software
Windows will search your computer and the Internet for the latest driver software for your device, unless you've disabled this feature in your device installation settings.

→ Browse my computer for driver software
Locate and install driver software manually.

Search for drivers in this location:

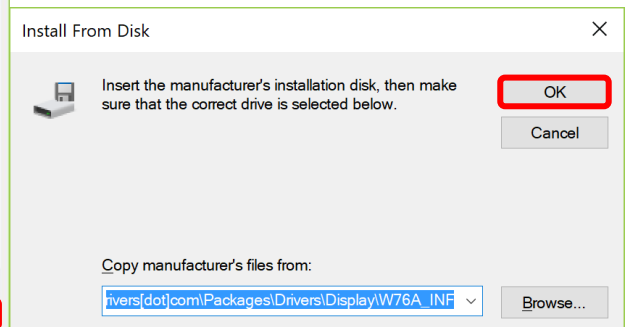
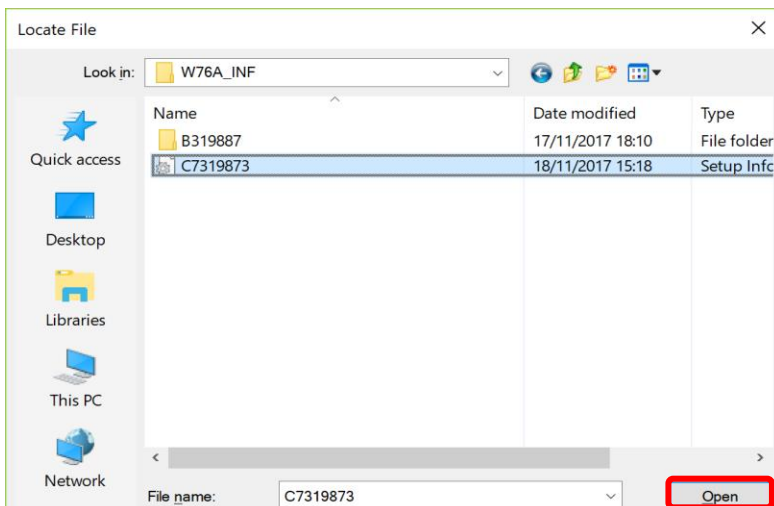
campdrivers[dot]com\Packages\Drivers\Display\W76A_INF\B319887

Browse...

☒ Include subfolders

→ Let me pick from a list of available drivers on my computer

This list will show available drivers compatible with the device, and all drivers in the same category as the device.



- 7) The 'Update Drivers' window should now reveal a list of potential compatible hardware. Select '**Radeon Pro 580**' or '**Radeon RX 580 Series**' then click 'Next' (weird I know as this isn't a 500 series card, but it works!)
- 8) The driver files should now be installing on top of the Bootcamp AMD driver. Restart when complete and enjoy the boost in FPS for games. Future iterations of the driver will hopefully be installable from the AMD setup.exe installer itself. For now this is the best option.

Optional extra step: Run 'Radeon settings installer' to install a newer version of Adrenalin settings (if required). If that doesn't work, run setup.exe, select 'Custom Install' and deselect the option to install the Display Driver.

If you have any other issues please let me know in the forum or in the chatroom on the website. Please consider donating to help us with website running costs. Thanks and enjoy!

Please see the website for F.A.Q.s and known issues with the driver.

OVERCLOCKING

Disclaimer: This a guide only and the values here are what I have found suitable for an M295X graphics card in an iMac 5k from 2014. Different mac models and graphics cards will have different overclocking limits. See the forum for other user's guides to overclocking with their graphics cards. Otherwise it is mostly trial and error!

What you need:

- MSI Afterburner or AMD Overdrive

MSI Afterburner available for download at: <https://www.msi.com/page/afterburner>

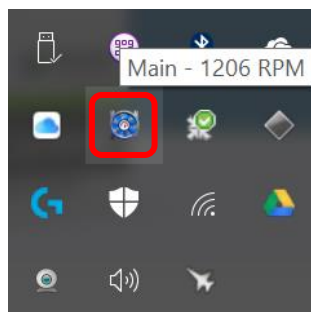
- MacsFanControl

Available for download at: <https://www.crystalidea.com/macsfan-control>

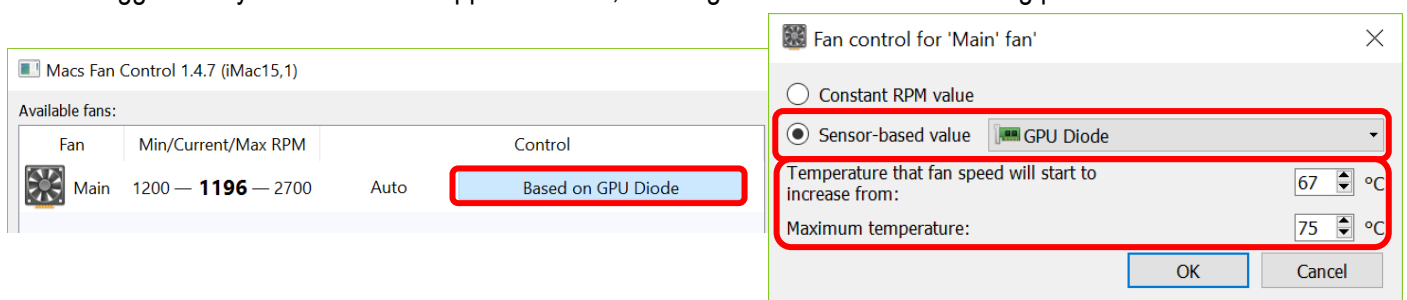
MACSFANCONTROL IS NOT WORKING FOR IMAC PRO YET

DO NOT USE THESE INSTRUCTIONS

- Download MacsFanControl. Run the setup and restart your computer.
- Once you're back on the desktop, click into the notifications bar on the bottom-right, right-click on the MacsFanControl icon and select 'Show MacsFanControl'.

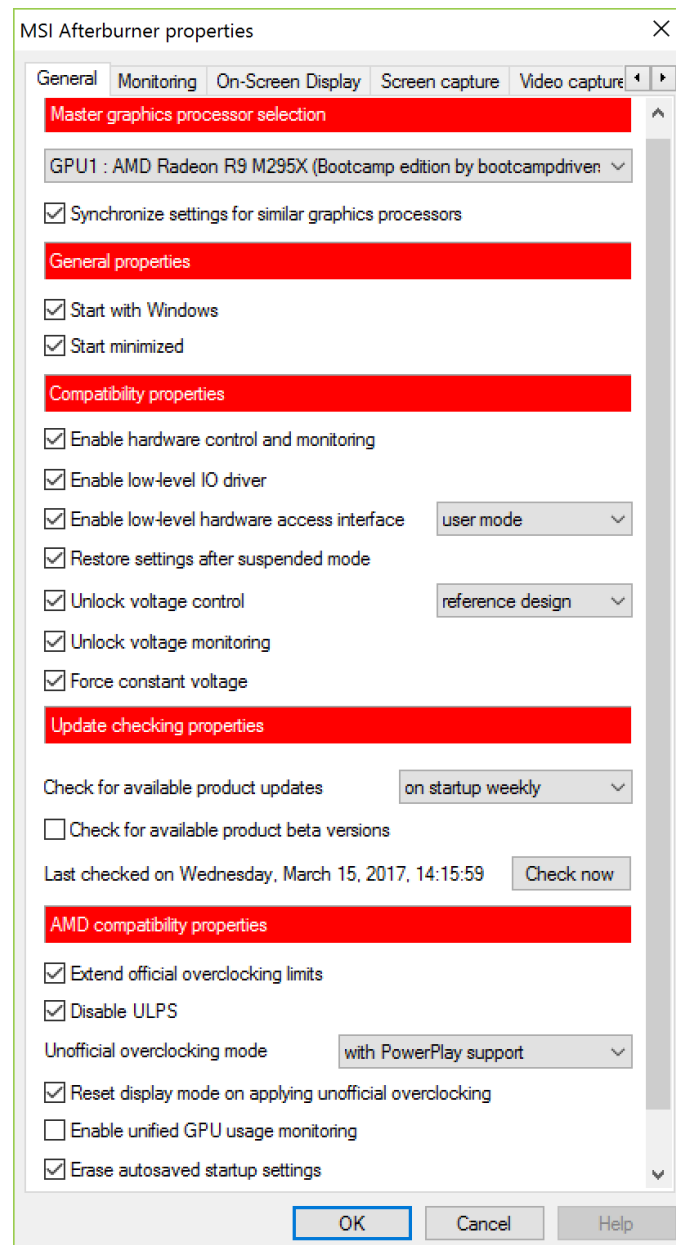


- In the window that appears, click on the text next to 'Auto' as shown below (bottom left), then ensure you have the following settings applied as shown below (bottom right). This will make the fans ramp up much more aggressively than with stock Apple firmware, allowing for maximum overclocking potential.



MSI AFTERBURNER INSTRUCTIONS

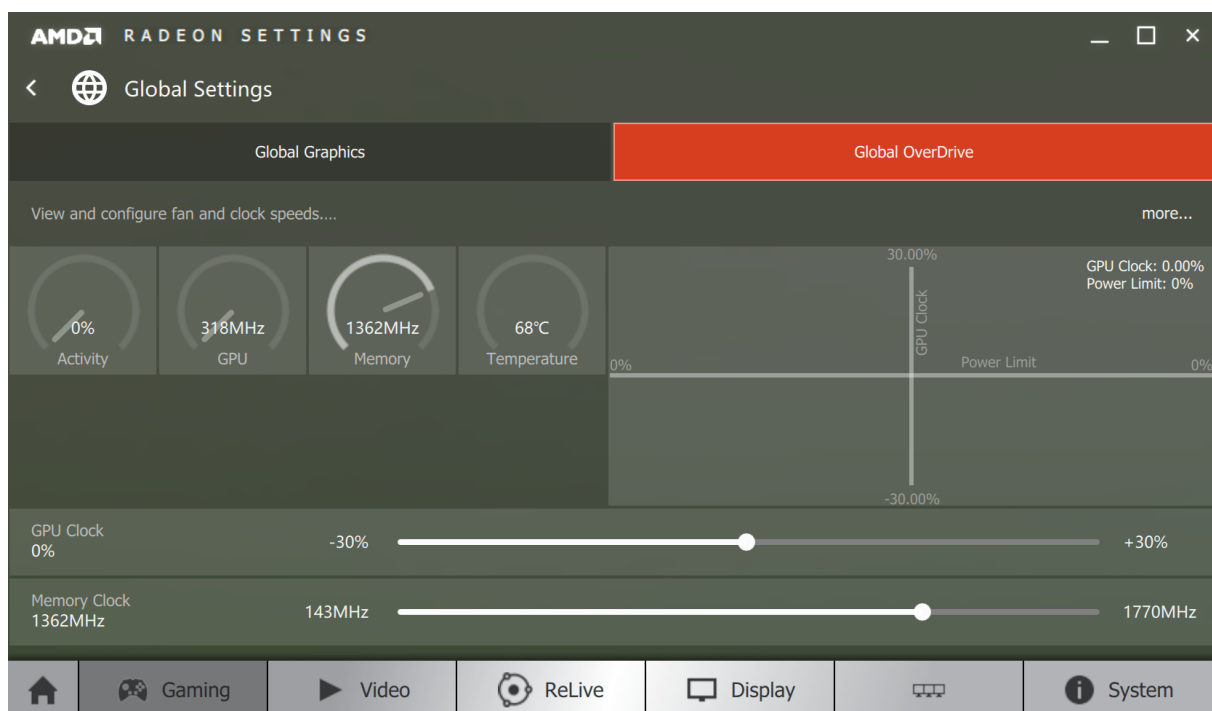
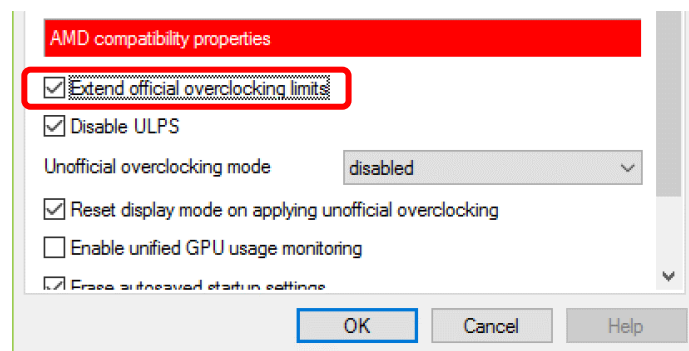
- Download MSI Afterburner. Run the setup and restart your computer.
- Open MSI Afterburner, then click on the settings button (this can vary where it is located based on which version or skin you are using).
- In the MSI Afterburner properties window that appears, ensure your settings match the following by ticking the unticked boxes as shown below.



- After clicking 'OK' you will be required to restart your computer for changes to take effect.
- Open MSI Afterburner again after rebooting. You can now alter the core clock and memory clock speeds on your graphics card. Recommended safe overclocking for M295X is 860 MHZ on core clock and 1400 MHZ on memory clock. This will vary for different graphics cards however. See the forum for more user guides.

AMD OVERDRIVE INSTRUCTIONS

- First of all, MSI Afterburner will need to be downloaded so that the setting to enable AMD Overdrive can be applied. Run the setup for MSI Afterburner then restart your computer.
- Open MSI Afterburner, then click on the settings button (this can vary where it is located based on which version or skin you are using).
- In the MSI Afterburner properties window that appears, there is one checkbox called 'Extend official overclocking limits' that needs to be ticked (see below). This will enable AMD Overdrive in the Radeon Crimson software, which can be found under the 'Gaming' tab and 'Global Settings' (see bottom image). Ignore all other checkboxes/settings in MSI Afterburner. **You may also need to set 'Unofficial overclocking mode' to 'with Powerplay support' with some driver versions.**



- After clicking 'OK' you will be required to restart your computer for changes to take effect.
- You can now remove MSI Afterburner from your computer if you wish.

Note: You may need to re-tick the 'Extend official overclock limits' box to enable overclocking again after installing a graphics driver update.